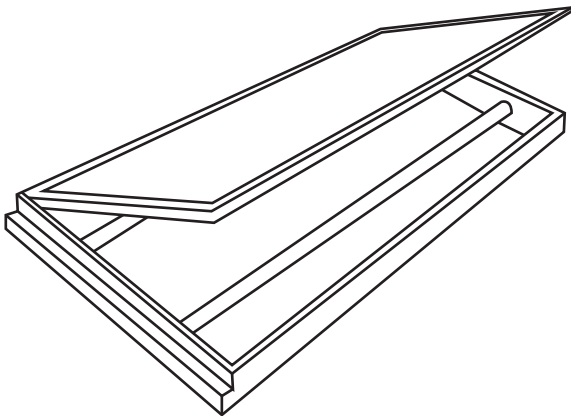




Clean Room Fitting



LINE DRAWING



INTENDED USE

CRF series is for recess clean room ceilings with energy saving 2 tubes, 3 tubes, and 4 tubes T5 or T5 high output. IP54 rated with gasketed hinged door. Ideal for pharmaceutical, semiconductor manufacturing and biomedical labs, food processing plants, hospitals, where the integrity of the cleanroom is maintained and protect against infiltration of particles. Also best solution when requiring lighting load as low as 2 watts/square meter/100 lux. 2'x4', 1'x4', 2'x2', 1'x2' Metric sizes available.

CONSTRUCTION AND OPTICS

Housing formed of high quality gauge sheet steel. Going through five-stage-iron-phosphate pre-treatment ensures superior paint adhesion and rust resistance. Housing painted after fabrication with environmentally friendly, high-gloss, very high reflectivity epoxy powder-coat. Come with options of having high reflectivity or full specular mirror reflector to achieved with anodized aluminium efficiently directs light downward. Available with clear acrylic diffuser or prismatic diffuser to provide even light distribution glare control and maximum light transmission, combined with a very low luminosity at angle approaching the horizontal surface. It is designed to minimize glare and maximize light output and visual comfort together with a good degree of protection. Polyurethane gasket is formed in the housing to achieve the IP54 rating.



DIMENSION OF FITTING

Wood Ceiling / Top Open (2 TUBE)

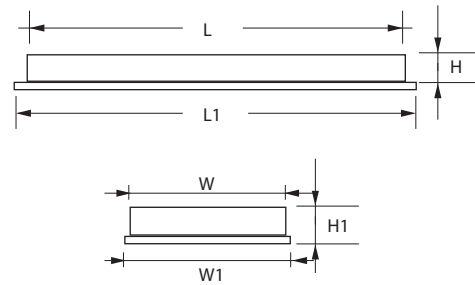
Product Code	Model Code	Watt	L mm	L1 mm	W mm	W1 mm	H mm	H1 mm
CLRMWS2TOP214	CLRM214	2x14W	615	635	295	335	78	87
CLRMWS2TCA214	CLRM214	2x14W	615	635	295	335	78	87
CLRMWS2TAP214	CLRM214	2x14W	615	635	295	335	78	87
CLRMWS2TPP214	CLRM214	2x14W	615	635	295	335	78	87
CLRMWS4TOP228	CLRM228	2x28W	1222	1245	295	335	78	87
CLRMWS4TCA228	CLRM228	2x28W	1222	1245	295	335	78	87
CLRMWS4TAP228	CLRM228	2x28W	1222	1245	295	335	78	87
CLRMWS4TPP228	CLRM228	2x28W	1222	1245	295	335	78	87
CLRMWS4TOP254	CLRM254	2x54W	1222	1245	295	335	78	87
CLRMWS4TCA254	CLRM254	2x54W	1222	1245	295	335	78	87
CLRMWS4TAP254	CLRM254	2x54W	1222	1245	295	335	78	87
CLRMWS4TPP254	CLRM254	2x54W	1222	1245	295	335	78	87
CLRMWN2TOP214	CLRM214	2x14W	615	635	600	640	78	87
CLRMWN2TCA214	CLRM214	2x14W	615	635	600	640	78	87
CLRMWN2TAP214	CLRM214	2x14W	615	635	600	640	78	87
CLRMWN2TPP214	CLRM214	2x14W	615	635	600	640	78	87
CLRMWN4TOP228	CLRM228	2x28W	1222	1245	600	640	78	87
CLRMWN4TCA228	CLRM228	2x28W	1222	1245	600	640	78	87
CLRMWN4TAP228	CLRM228	2x28W	1222	1245	600	640	78	87
CLRMWN4TPP228	CLRM228	2x28W	1222	1245	600	640	78	87
CLRMWN4TOP254	CLRM254	2x54W	1222	1245	600	640	78	87
CLRMWN4TCA254	CLRM254	2x54W	1222	1245	600	640	78	87
CLRMWN4TAP254	CLRM254	2x54W	1222	1245	600	640	78	87
CLRMWN4TPP254	CLRM254	2x54W	1222	1245	600	640	78	87

Wood Ceiling / Bottom Open (2 TUBE)

Product Code	Model Code	Watt	L mm	L1 mm	W mm	W1 mm	H mm	H1 mm
CLRMWS2BOP214	CLRM214	2x14W	615	635	295	335	78	87
CLRMWS2BCA214	CLRM214	2x14W	615	635	295	335	78	87
CLRMWS2BAP214	CLRM214	2x14W	615	635	295	335	78	87
CLRMWS2BPP214	CLRM214	2x14W	615	635	295	335	78	87
CLRMWS4BOP228	CLRM228	2x28W	1222	1245	295	335	78	87
CLRMWS4BCA228	CLRM228	2x28W	1222	1245	295	335	78	87
CLRMWS4BAP228	CLRM228	2x28W	1222	1245	295	335	78	87
CLRMWS4BPP228	CLRM228	2x28W	1222	1245	295	335	78	87
CLRMWS4BOP254	CLRM254	2x54W	1222	1245	295	335	78	87
CLRMWS4BCA254	CLRM254	2x54W	1222	1245	295	335	78	87
CLRMWS4BAP254	CLRM254	2x54W	1222	1245	295	335	78	87
CLRMWS4BPP254	CLRM254	2x54W	1222	1245	295	335	78	87
CLRMWN2BOP214	CLRM214	2x14W	615	635	600	640	78	87
CLRMWN2BCA214	CLRM214	2x14W	615	635	600	640	78	87
CLRMWN2BAP214	CLRM214	2x14W	615	635	600	640	78	87
CLRMWN2BPP214	CLRM214	2x14W	615	635	600	640	78	87
CLRMWN4BOP228	CLRM228	2x28W	1222	1245	600	640	78	87
CLRMWN4BCA228	CLRM228	2x28W	1222	1245	600	640	78	87
CLRMWN4BAP228	CLRM228	2x28W	1222	1245	600	640	78	87
CLRMWN4BPP228	CLRM228	2x28W	1222	1245	600	640	78	87
CLRMWN4BOP254	CLRM254	2x54W	1222	1245	600	640	78	87
CLRMWN4BCA254	CLRM254	2x54W	1222	1245	600	640	78	87
CLRMWN4BAP254	CLRM254	2x54W	1222	1245	600	640	78	87
CLRMWN4BPP254	CLRM254	2x54W	1222	1245	600	640	78	87

DIMENSIONS

(Wood Ceiling)



ORDERING INFORMATION Lead times will vary based on options selected. Consult with your sales representative. Example: CLRMWS2BOP224

Type	Installation Type	Size	Design	Diffuser Mech	Diffuser Type	Reflector Design	System	Tubes
Clean Room (CLRM)	W Wood Ceiling T T-Bar S Surface	I Imperial M Metric <Blank> N/A	S2 Slim (1' x 2') S4 Slim (1' x 4') N2 Normal (2' x 2') N4 Normal (2' x 4')	B Bottom Open & Hinged type T Top Open & Hinged type	OP Opal CA Clear Acrylic AP AA Prismatic PP PS Prismatic	0 No Reflector 1 Top Mirror Reflector 2 Full Top Mirror Reflector 3 Round Top Mirror Refl (Parabolic type)	5 T5 8 T8 D LED	2 2 Tubes 3 3 Tubes 4 4 Tubes

DIMENSION OF FITTING

Wood Ceiling / Top Open (3 TUBE)

Product Code	Model Code	Watt	L mm	L1 mm	W mm	W1 mm	H mm	H1 mm
CLRMWN2TOP314	CLRM314	3x14W	615	635	600	640	78	87
CLRMWN2TCA314	CLRM314	3x14W	615	635	600	640	78	87
CLRMWN2TAP314	CLRM314	3x14W	615	635	600	640	78	87
CLRMWN2TPP314	CLRM314	3x14W	615	635	600	640	78	87
CLRMWN4TOP328	CLRM328	3x28W	1222	1245	600	640	78	87
CLRMWN4TCA328	CLRM328	3x28W	1222	1245	600	640	78	87
CLRMWN4TAP328	CLRM328	3x28W	1222	1245	600	640	78	87
CLRMWN4TPP328	CLRM328	3x28W	1222	1245	600	640	78	87
CLRMWN4TOP354	CLRM354	3x54W	1222	1245	600	640	78	87
CLRMWN4TCA354	CLRM354	3x54W	1222	1245	600	640	78	87
CLRMWN4TAP354	CLRM354	3x54W	1222	1245	600	640	78	87
CLRMWN4TPP354	CLRM354	3x54W	1222	1245	600	640	78	87

Wood Ceiling / Top Open (4 TUBE)

Product Code	Model Code	Watt	L mm	L1 mm	W mm	W1 mm	H mm	H1 mm
CLRMWN2TOP414	CLRM414	4x14W	615	635	600	640	78	87
CLRMWN2TCA414	CLRM414	4x14W	615	635	600	640	78	87
CLRMWN2TAP414	CLRM414	4x14W	615	635	600	640	78	87
CLRMWN2TPP414	CLRM414	4x14W	615	635	600	640	78	87
CLRMWN4TOP428	CLRM428	4x28W	1222	1245	600	640	78	87
CLRMWN4TCA428	CLRM428	4x28W	1222	1245	600	640	78	87
CLRMWN4TAP428	CLRM428	4x28W	1222	1245	600	640	78	87
CLRMWN4TPP428	CLRM428	4x28W	1222	1245	600	640	78	87
CLRMWN4TOP454	CLRM454	4x54W	1222	1245	600	640	78	87
CLRMWN4TCA454	CLRM454	4x54W	1222	1245	600	640	78	87
CLRMWN4TAP454	CLRM454	4x54W	1222	1245	600	640	78	87
CLRMWN4TPP454	CLRM454	4x54W	1222	1245	600	640	78	87

Wood Ceiling / Bottom Open (3 TUBE)

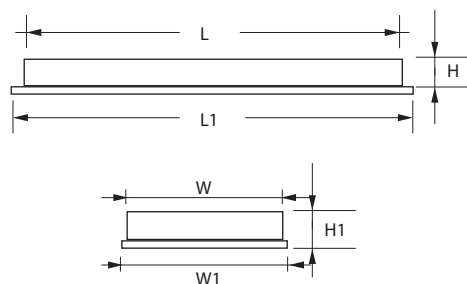
Product Code	Model Code	Watt	L mm	L1 mm	W mm	W1 mm	H mm	H1 mm
CLRMWN2BOP314	CLRM314	3x14W	615	635	600	640	78	87
CLRMWN2BCA314	CLRM314	3x14W	615	635	600	640	78	87
CLRMWN2BAP314	CLRM314	3x14W	615	635	600	640	78	87
CLRMWN2BPP314	CLRM314	3x14W	615	635	600	640	78	87
CLRMWN4BOP328	CLRM328	3x28W	1222	1245	600	640	78	87
CLRMWN4BCA328	CLRM328	3x28W	1222	1245	600	640	78	87
CLRMWN4BAP328	CLRM328	3x28W	1222	1245	600	640	78	87
CLRMWN4BPP328	CLRM328	3x28W	1222	1245	600	640	78	87
CLRMWN4BOP354	CLRM354	3x54W	1222	1245	600	640	78	87
CLRMWN4BCA354	CLRM354	3x54W	1222	1245	600	640	78	87
CLRMWN4BAP354	CLRM354	3x54W	1222	1245	600	640	78	87
CLRMWN4BPP354	CLRM354	3x54W	1222	1245	600	640	78	87

Wood Ceiling / Bottom Open (4 TUBE)

Product Code	Model Code	Watt	L mm	L1 mm	W mm	W1 mm	H mm	H1 mm
CLRMWN2BOP414	CLRM414	4x14W	615	635	600	640	78	87
CLRMWN2BCA414	CLRM414	4x14W	615	635	600	640	78	87
CLRMWN2BAP414	CLRM414	4x14W	615	635	600	640	78	87
CLRMWN2BPP414	CLRM414	4x14W	615	635	600	640	78	87
CLRMWN4BOP428	CLRM428	4x28W	1222	1245	600	640	78	87
CLRMWN4BCA428	CLRM428	4x28W	1222	1245	600	640	78	87
CLRMWN4BAP428	CLRM428	4x28W	1222	1245	600	640	78	87
CLRMWN4BPP428	CLRM428	4x28W	1222	1245	600	640	78	87
CLRMWN4BOP454	CLRM454	4x54W	1222	1245	600	640	78	87
CLRMWN4BCA454	CLRM454	4x54W	1222	1245	600	640	78	87
CLRMWN4BAP454	CLRM454	4x54W	1222	1245	600	640	78	87
CLRMWN4BPP454	CLRM454	4x54W	1222	1245	600	640	78	87

DIMENSIONS

(Wood Ceiling)



ORDERING INFORMATION Lead times will vary based on options selected. Consult with your sales representative. Example: CLRMWS2BOP224

Type	Installation Type	Size	Design	Diffuser Mech	Diffuser Type	Reflector Design	System	Tubes
Clean Room (CLRM)	W Wood Ceiling	I Imperial	S2 Slim (1' x 2')	B Bottom Open & Hinged type	OP Opal	0 No Reflector	5 T5	2 2 Tubes
	T T-Bar	M Metric	S4 Slim (1' x 4')		CA Clear Acrylic	1 Top Mirror Reflector	8 T8	3 3 Tubes
	S Surface	<Blank> N/A	N2 Normal (2' x 2')	N4 Normal (2' x 4')	AP AA Prismatic	2 Full Top Mirror Reflector	D LED	4 4 Tubes
				T Top Open & Hinged type	PP PS Prismatic	3 Round Top Mirror Refl (Parabolic type)		

DIMENSION OF FITTING

Surface / Top Open (2 TUBE)

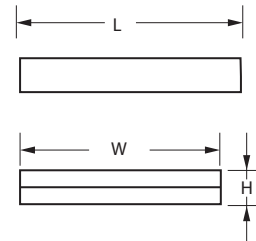
Product Code	Model Code	Watt	L mm	W mm	H mm
CLRMSS2TOP214	CLRM214	2x14W	612	298	85
CLRMSS2TCA214	CLRM214	2x14W	612	298	85
CLRMSS2TAP214	CLRM214	2x14W	612	298	85
CLRMSS2TPP214	CLRM214	2x14W	612	298	85
CLRMSS4TOP228	CLRM228	2x28W	1222	298	85
CLRMSS4TCA228	CLRM228	2x28W	1222	298	85
CLRMSS4TAP228	CLRM228	2x28W	1222	298	85
CLRMSS4TPP228	CLRM228	2x28W	1222	298	85
CLRMSS4TOP254	CLRM254	2x54W	1222	298	85
CLRMSS4TCA254	CLRM254	2x54W	1222	298	85
CLRMSS4TAP254	CLRM254	2x54W	1222	298	85
CLRMSS4TPP254	CLRM254	2x54W	1222	298	85
CLRMSN2TOP214	CLRM214	2x14W	612	603	85
CLRMSN2TCA214	CLRM214	2x14W	612	603	85
CLRMSN2TAP214	CLRM214	2x14W	612	603	85
CLRMSN2TPP214	CLRM214	2x14W	612	603	85
CLRMSN4TOP228	CLRM228	2x28W	1222	603	85
CLRMSN4TCA228	CLRM228	2x28W	1222	603	85
CLRMSN4TAP228	CLRM228	2x28W	1222	603	85
CLRMSN4TPP228	CLRM228	2x28W	1222	603	85
CLRMSN4TOP254	CLRM254	2x54W	1222	603	85
CLRMSN4TCA254	CLRM254	2x54W	1222	603	85
CLRMSN4TAP254	CLRM254	2x54W	1222	603	85
CLRMSN4TPP254	CLRM254	2x54W	1222	603	85

Surface / Bottom Open (2 TUBE)

Product Code	Model Code	Watt	L mm	W mm	H mm
CLRMSS2BOP214	CLRM214	2x14W	612	298	85
CLRMSS2BCA214	CLRM214	2x14W	612	298	85
CLRMSS2BAP214	CLRM214	2x14W	612	298	85
CLRMSS2BPP214	CLRM214	2x14W	612	298	85
CLRMSS4BOP228	CLRM228	2x28W	1222	298	85
CLRMSS4BCA228	CLRM228	2x28W	1222	298	85
CLRMSS4BAP228	CLRM228	2x28W	1222	298	85
CLRMSS4BPP228	CLRM228	2x28W	1222	298	85
CLRMSS4BOP254	CLRM254	2x54W	1222	298	85
CLRMSS4BCA254	CLRM254	2x54W	1222	298	85
CLRMSS4BAP254	CLRM254	2x54W	1222	298	85
CLRMSS4BPP254	CLRM254	2x54W	1222	298	85
CLRMSN2BOP214	CLRM214	2x14W	612	603	85
CLRMSN2BCA214	CLRM214	2x14W	612	603	85
CLRMSN2BAP214	CLRM214	2x14W	612	603	85
CLRMSN2BPP214	CLRM214	2x14W	612	603	85
CLRMSN4BOP228	CLRM228	2x28W	1222	603	85
CLRMSN4BCA228	CLRM228	2x28W	1222	603	85
CLRMSN4BAP228	CLRM228	2x28W	1222	603	85
CLRMSN4BPP228	CLRM228	2x28W	1222	603	85
CLRMSN4BOP254	CLRM254	2x54W	1222	603	85
CLRMSN4BCA254	CLRM254	2x54W	1222	603	85
CLRMSN4BAP254	CLRM254	2x54W	1222	603	85
CLRMSN4BPP254	CLRM254	2x54W	1222	603	85

DIMENSIONS

(Surface)



ORDERING INFORMATION Lead times will vary based on options selected. Consult with your sales representative. Example: CLRMSS2BOP224

Type	Installation Type	Size	Design	Diffuser Mech	Diffuser Type	Reflector Design	System	Tubes
Clean Room (CLRM)	W Wood Ceiling	I Imperial	S2 Slim (1' x 2')	B Bottom Open & Hinged type	OP Opal	0 No Reflector	5 T5	2 2 Tubes
	T T-Bar	M Metric	S4 Slim (1' x 4')	T Top Open & Hinged type	CA Clear Acrylic	1 Top Mirror Reflector	8 T8	3 3 Tubes
	S Surface	<Blank> N/A	N2 Normal (2' x 2')		AP AA Prismatic	2 Full Top Mirror Reflector	D LED	4 4 Tubes
			N4 Normal (2' x 4')	PP PS Prismatic	3 Round Top Mirror Refl (Parabolic type)			

DIMENSION OF FITTING

Surface / Top Open (3 TUBE)

Product Code	Model Code	Watt	L mm	W mm	H mm
CLRMSN2TOP314	CLRM314	3x14W	612	603	85
CLRMSN2TCA314	CLRM314	3x14W	612	603	85
CLRMSN2TAP314	CLRM314	3x14W	612	603	85
CLRMSN2TPP314	CLRM314	3x14W	612	603	85
CLRMSN4TOP328	CLRM328	3x28W	1222	603	85
CLRMSN4TCA328	CLRM328	3x28W	1222	603	85
CLRMSN4TAP328	CLRM328	3x28W	1222	603	85
CLRMSN4TPP328	CLRM328	3x28W	1222	603	85
CLRMSN4TOP354	CLRM354	3x54W	1222	603	85
CLRMSN4TCA354	CLRM354	3x54W	1222	603	85
CLRMSN4TAP354	CLRM354	3x54W	1222	603	85
CLRMSN4TPP354	CLRM354	3x54W	1222	603	85

Surface / Top Open (4 TUBE)

Product Code	Model Code	Watt	L mm	W mm	H mm
CLRMSN2TOP414	CLRM414	4x14W	612	603	85
CLRMSN2TCA414	CLRM414	4x14W	612	603	85
CLRMSN2TAP414	CLRM414	4x14W	612	603	85
CLRMSN2TPP414	CLRM414	4x14W	612	603	85
CLRMSN4TOP428	CLRM428	4x28W	1222	603	85
CLRMSN4TCA428	CLRM428	4x28W	1222	603	85
CLRMSN4TAP428	CLRM428	4x28W	1222	603	85
CLRMSN4TPP428	CLRM428	4x28W	1222	603	85
CLRMSN4TOP454	CLRM454	4x54W	1222	603	85
CLRMSN4TCA454	CLRM454	4x54W	1222	603	85
CLRMSN4TAP454	CLRM454	4x54W	1222	603	85
CLRMSN4TPP454	CLRM454	4x54W	1222	603	85

Surface / Bottom Open (3 TUBE)

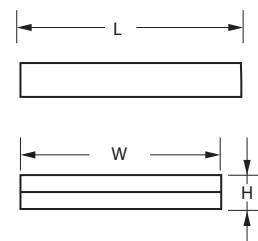
Product Code	Model Code	Watt	L mm	W mm	H mm
CLRMSN2BOP314	CLRM314	3x14W	612	603	85
CLRMSN2BCA314	CLRM314	3x14W	612	603	85
CLRMSN2BAP314	CLRM314	3x14W	612	603	85
CLRMSN2BPP314	CLRM314	3x14W	612	603	85
CLRMSN4BOP328	CLRM328	3x28W	1222	603	85
CLRMSN4BCA328	CLRM328	3x28W	1222	603	85
CLRMSN4BAP328	CLRM328	3x28W	1222	603	85
CLRMSN4BPP328	CLRM328	3x28W	1222	603	85
CLRMSN4BOP354	CLRM354	3x54W	1222	603	85
CLRMSN4BCA354	CLRM354	3x54W	1222	603	85
CLRMSN4BAP354	CLRM354	3x54W	1222	603	85
CLRMSN4BPP354	CLRM354	3x54W	1222	603	85

Surface / Bottom Open (4 TUBE)

Product Code	Model Code	Watt	L mm	W mm	H mm
CLRMSN2BOP414	CLRM414	4x14W	612	603	85
CLRMSN2BCA414	CLRM414	4x14W	612	603	85
CLRMSN2BAP414	CLRM414	4x14W	612	603	85
CLRMSN2BPP414	CLRM414	4x14W	612	603	85
CLRMSN4BOP428	CLRM428	4x28W	1222	603	85
CLRMSN4BCA428	CLRM428	4x28W	1222	603	85
CLRMSN4BAP428	CLRM428	4x28W	1222	603	85
CLRMSN4BPP428	CLRM428	4x28W	1222	603	85
CLRMSN4BOP454	CLRM454	4x54W	1222	603	85
CLRMSN4BCA454	CLRM454	4x54W	1222	603	85
CLRMSN4BAP454	CLRM454	4x54W	1222	603	85
CLRMSN4BPP454	CLRM454	4x54W	1222	603	85

DIMENSIONS

(Surface)



ORDERING INFORMATION Lead times will vary based on options selected. Consult with your sales representative. Example: CLRMS2BOP224

Type	Installation Type	Size	Design	Diffuser Mech	Diffuser Type	Reflector Design	System	Tubes
Clean Room (CLRM)	W Wood Ceiling	I Imperial	S2 Slim (1' x 2')	B Bottom Open & Hinged type	OP Opal	0 No Reflector	5 T5	2 2 Tubes
	T T-Bar	M Metric	S4 Slim (1' x 4')	T Top Open & Hinged type	CA Clear Acrylic	1 Top Mirror Reflector	8 T8	3 3 Tubes
S Surface	<Blank> N/A	N2 Normal (2' x 2')	N4 Normal (2' x 4')		AP AA Prismatic	2 Full Top Mirror Reflector	D LED	4 4 Tubes
				PP PS Prismatic	3 Round Top Mirror Refl (Parabolic type)			

DIMENSION OF FITTING

T-Bar / Imperial / Top Open (2 TUBE)

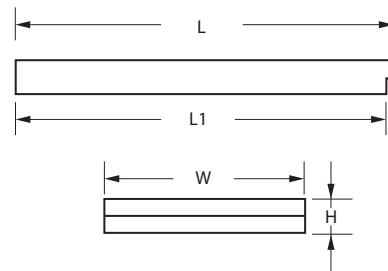
Product Code	Model Code	Watt	L mm	L1 mm	W mm	H mm
CLRMTIS2TOP214	CLRM214	2x14W	612	600	298	90
CLRMTIS2TCA214	CLRM214	2x14W	612	600	298	90
CLRMTIS2TAP214	CLRM214	2x14W	612	600	298	90
CLRMTIS2TPP214	CLRM214	2x14W	612	600	298	90
CLRMTIS4TOP228	CLRM228	2x28W	1222	1210	298	90
CLRMTIS4TCA228	CLRM228	2x28W	1222	1210	298	90
CLRMTIS4TAP228	CLRM228	2x28W	1222	1210	298	90
CLRMTIS4TPP228	CLRM228	2x28W	1222	1210	298	90
CLRMTIS4TOP254	CLRM254	2x54W	1222	1210	298	90
CLRMTIS4TCA254	CLRM254	2x54W	1222	1210	298	90
CLRMTIS4TAP254	CLRM254	2x54W	1222	1210	298	90
CLRMTIS4TPP254	CLRM254	2x54W	1222	1210	298	90
CLRMTIN2TOP214	CLRM214	2x14W	612	600	605	90
CLRMTIN2TCA214	CLRM214	2x14W	612	600	605	90
CLRMTIN2TAP214	CLRM214	2x14W	612	600	605	90
CLRMTIN2TPP214	CLRM214	2x14W	612	600	605	90
CLRMTIN4TOP228	CLRM228	2x28W	1222	1210	605	90
CLRMTIN4TCA228	CLRM228	2x28W	1222	1210	605	90
CLRMTIN4TAP228	CLRM228	2x28W	1222	1210	605	90
CLRMTIN4TPP228	CLRM228	2x28W	1222	1210	605	90
CLRMTIN4TOP254	CLRM254	2x54W	1222	1210	605	90
CLRMTIN4TCA254	CLRM254	2x54W	1222	1210	605	90
CLRMTIN4TAP254	CLRM254	2x54W	1222	1210	605	90
CLRMTIN4TPP254	CLRM254	2x54W	1222	1210	605	90

T-Bar / Metric / Bottom Open (2 TUBE)

Product Code	Model Code	Watt	L mm	L1 mm	W mm	H mm
CLRMTMS2BOP214	CLRM214	2x14W	612	585	295	90
CLRMTMS2BCA214	CLRM214	2x14W	612	585	295	90
CLRMTMS2BAP214	CLRM214	2x14W	612	585	295	90
CLRMTMS2BPP214	CLRM214	2x14W	612	585	295	90
CLRMTMS4BOP228	CLRM228	2x28W	1222	1195	295	90
CLRMTMS4BCA228	CLRM228	2x28W	1222	1195	295	90
CLRMTMS4BAP228	CLRM228	2x28W	1222	1195	295	90
CLRMTMS4BPP228	CLRM228	2x28W	1222	1195	295	90
CLRMTMS4BOP254	CLRM254	2x54W	1222	1195	295	90
CLRMTMS4BCA254	CLRM254	2x54W	1222	1195	295	90
CLRMTMS4BAP254	CLRM254	2x54W	1222	1195	295	90
CLRMTMS4BPP254	CLRM254	2x54W	1222	1195	295	90
CLRMTMN2BOP214	CLRM214	2x14W	612	585	595	90
CLRMTMN2BCA214	CLRM214	2x14W	612	585	595	90
CLRMTMN2BAP214	CLRM214	2x14W	612	585	595	90
CLRMTMN2BPP214	CLRM214	2x14W	612	585	595	90
CLRMTMN4BOP228	CLRM228	2x28W	1222	1195	595	90
CLRMTMN4BCA228	CLRM228	2x28W	1222	1195	595	90
CLRMTMN4BAP228	CLRM228	2x28W	1222	1195	595	90
CLRMTMN4BPP228	CLRM228	2x28W	1222	1195	595	90
CLRMTMN4BOP254	CLRM254	2x54W	1222	1195	595	90
CLRMTMN4BCA254	CLRM254	2x54W	1222	1195	595	90
CLRMTMN4BAP254	CLRM254	2x54W	1222	1195	595	90
CLRMTMN4BPP254	CLRM254	2x54W	1222	1195	595	90

DIMENSIONS

(T-Bar)



ORDERING INFORMATION Lead times will vary based on options selected. Consult with your sales representative. Example: CLRMTIS2BOP224

Type	Installation Type	Size	Design	Diffuser Mech	Diffuser Type	Reflector Design	System	Tubes
Clean Room (CLRM)	W Wood Ceiling	I Imperial	S2 Slim (1' x 2')	B Bottom Open & Hinged type	OP Opal	0 No Reflector	5 T5	2 2 Tubes
	T T-Bar	M Metric	S4 Slim (1' x 4')	T Top Open & Hinged type	CA Clear Acrylic	1 Top Mirror Reflector	8 T8	3 3 Tubes
	S Surface	<Blank> N/A	N2 Normal (2' x 2')		AP AA Prismatic	2 Full Top Mirror Reflector	D LED	4 4 Tubes
			N4 Normal (2' x 4')		PP PS Prismatic	3 Round Top Mirror Refl (Parabolic type)		

DIMENSION OF FITTING

T-Bar / Imperial / Top Open (3 TUBE)

Product Code	Model Code	Watt	L mm	L1 mm	W mm	H mm
CLRMTIN2TOP314	CLRM314	3x14W	612	600	605	90
CLRMTIN2TCA314	CLRM314	3x14W	612	600	605	90
CLRMTIN2TAP314	CLRM314	3x14W	612	600	605	90
CLRMTIN2TPP314	CLRM314	3x14W	612	600	605	90
CLRMTIN4TOP328	CLRM328	3x28W	1222	1210	605	90
CLRMTIN4TCA328	CLRM328	3x28W	1222	1201	605	90
CLRMTIN4TAP328	CLRM328	3x28W	1222	1210	605	90
CLRMTIN4TPP328	CLRM328	3x28W	1222	1210	605	90
CLRMTIN4TOP354	CLRM354	3x54W	1222	1210	605	90
CLRMTIN4TCA354	CLRM354	3x54W	1222	1210	605	90
CLRMTIN4TAP354	CLRM354	3x54W	1222	1210	605	90
CLRMTIN4TPP354	CLRM354	3x54W	1222	1210	605	90

T-Bar / Imperial / Top Open (4 TUBE)

Product Code	Model Code	Watt	L mm	L1 mm	W mm	H mm
CLRMTIN2TOP414	CLRM414	4x14W	612	600	605	90
CLRMTIN2TCA414	CLRM414	4x14W	612	600	605	90
CLRMTIN2TAP414	CLRM414	4x14W	612	600	605	90
CLRMTIN2TPP414	CLRM414	4x14W	612	600	605	90
CLRMTIN4TOP428	CLRM428	4x28W	1222	1210	605	90
CLRMTIN4TCA428	CLRM428	4x28W	1222	1210	605	90
CLRMTIN4TAP428	CLRM428	4x28W	1222	1210	605	90
CLRMTIN4TPP428	CLRM428	4x28W	1222	1210	605	90
CLRMTIN4TOP454	CLRM454	4x54W	1222	1210	605	90
CLRMTIN4TCA454	CLRM454	4x54W	1222	1210	605	90
CLRMTIN4TAP454	CLRM454	4x54W	1222	1210	605	90
CLRMTIN4TPP454	CLRM454	4x54W	1222	1210	605	90

T-Bar / Metric / Bottom Open (3 TUBE)

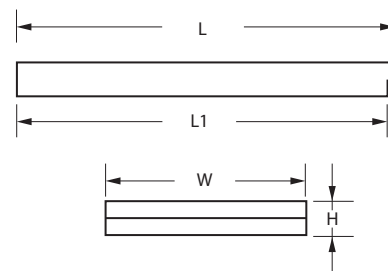
Product Code	Model Code	Watt	L mm	L1 mm	W mm	H mm
CLRMTMN2BOP314	CLRM314	3x14W	612	585	595	90
CLRMTMN2BCA314	CLRM314	3x14W	612	585	595	90
CLRMTMN2BAP314	CLRM314	3x14W	612	585	595	90
CLRMTMN2BPP314	CLRM314	3x14W	612	585	595	90
CLRMTMN4BOP328	CLRM328	3x28W	1222	1195	595	90
CLRMTMN4BCA328	CLRM328	3x28W	1222	1195	595	90
CLRMTMN4BAP328	CLRM328	3x28W	1222	1195	595	90
CLRMTMN4BPP328	CLRM328	3x28W	1222	1195	595	90
CLRMTMN4BOP354	CLRM354	3x54W	1222	1195	595	90
CLRMTMN4BCA354	CLRM354	3x54W	1222	1195	595	90
CLRMTMN4BAP354	CLRM354	3x54W	1222	1195	595	90
CLRMTMN4BPP354	CLRM354	3x54W	1222	1195	595	90

T-Bar / Metric / Bottom Open (4 TUBE)

Product Code	Model Code	Watt	L mm	L1 mm	W mm	H mm
CLRMTMN2BOP414	CLRM414	4x14W	612	585	595	90
CLRMTMN2BCA414	CLRM414	4x14W	612	585	595	90
CLRMTMN2BAP414	CLRM414	4x14W	612	585	595	90
CLRMTMN2BPP414	CLRM414	4x14W	612	585	595	90
CLRMTMN4BOP428	CLRM428	4x28W	1222	1195	595	90
CLRMTMN4BCA428	CLRM428	4x28W	1222	1195	595	90
CLRMTMN4BAP428	CLRM428	4x28W	1222	1195	595	90
CLRMTMN4BPP428	CLRM428	4x28W	1222	1195	595	90
CLRMTMN4BOP454	CLRM454	4x54W	1222	1195	595	90
CLRMTMN4BCA454	CLRM454	4x54W	1222	1195	595	90
CLRMTMN4BAP454	CLRM454	4x54W	1222	1195	595	90
CLRMTMN4BPP454	CLRM454	4x54W	1222	1195	595	90

DIMENSIONS

(T-Bar)



ORDERING INFORMATION Lead times will vary based on options selected. Consult with your sales representative. Example: CLRMTMS2BOP224

Type	Installation Type	Size	Design	Diffuser Mech	Diffuser Type	Reflector Design	System	Tubes
Clean Room (CLRM)	W Wood Ceiling	I Imperial	S2 Slim (1' x 2')	B Bottom Open & Hinged type	OP Opal	0 No Reflector	5 T5	2 2 Tubes
	T T-Bar	M Metric	S4 Slim (1' x 4')		CA Clear Acrylic	1 Top Mirror Reflector	8 T8	3 3 Tubes
	S Surface	<Blank> N/A	N2 Normal (2' x 2')	N4 Normal (2' x 4')	AP AA Prismatic	2 Full Top Mirror Reflector	D LED	4 4 Tubes
				T Top Open & Hinged type	PP PS Prismatic	3 Round Top Mirror Refl (Parabolic type)		