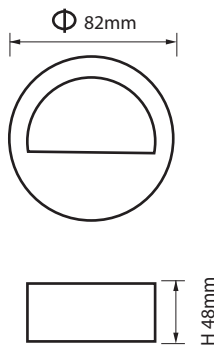




LED Wall Recess Step Light WS48083



DIMENSIONS



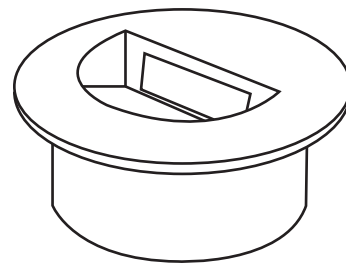
INTENDED USE

Hi-BEAM WS48083 LED wall recess step light deliver excellent led performance for applications such as building facade, passage ways, villa, hotels, house or corridors to replace conventional traditional PLC / CDMT solutions.

CONSTRUCTION AND OPTICS

Aluminium die-casting housing, tempered glass diffuser. LED lifespan of 35,000 hours. Input Voltage is AC210V-280VAC, 50/60Hz.

LINE DRAWING

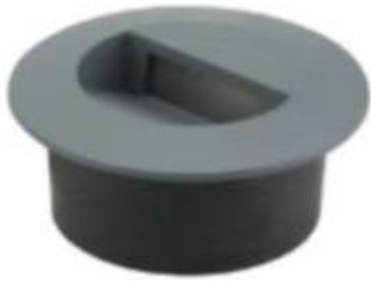


DIMENSION OF FITTING

Product Code	Model Code	Wattage	Color Temperature
WS48083-2W	WS48083	2W	3000-4000K



LED WALL RECESS STEP LIGHT - WS48083



Hi-BEAM WS48083 LED wall recess step light deliver excellent led performance for applications such as building facade, passage ways, villa, hotels, house or corridors to replace conventional traditional PLC / CDMT solutions.



Product data

General Information

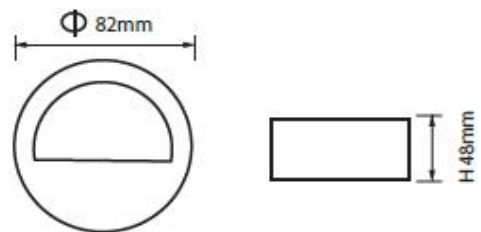
Product family code	WS48083
Housing Material	Aluminum die-casting housing, Tempered glass diffuser
Housing Color	Grey
LED Life Span	35,000 hours
Ingress Protection	IP65/IK 07
CRI	75
CCTK	3000-4000K

Operating Temperature -5C to+50C
Power Supply 210-280VAC ~50/60 Hz

Initial Input Power	2W
Total Luminous Flux	300 lm
Power Factor	>0. 95

Dimension

Dimension : $\varnothing 82$ x (H) 48mm



Note: Specification are subject to change without prior notice

www.degindustrial.com



HI-BEAM™ Lighting

